



Disponible en ligne sur

ScienceDirect
www.sciencedirect.com

Elsevier Masson France

EM|consulte
www.em-consulte.com

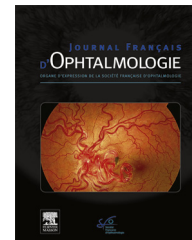


IMAGE BANK

Unilateral pyramidal cataract



Cataracte pyramidale unilatérale

Z. El Moize^a, O. Lezrek^{b,*}, N. Htiti^a, Y. El Harrak^a,
S. Tachfouti^a, M. Laghmari^a, O. Cherkaoui^a

^a Service d'ophtalmologie A de l'hôpital des spécialités, université Mohammed-V-Souissi, centre hospitalier universitaire, Rabat, Maroc

^b Cabinet Lazrak d'ophtalmologie, Rabat, Maroc

A 21-year-old man consults for low vision in left eye, the best-corrected visual acuity was 20/20 OD and 20/50 OS, slit lamp examination found a prominent pyramidal growth in the anterior chamber and measuring 3.5mm in diameter at the base of the pyramid (Figs. 1 and 2). Fundus examination was normal. Pyramidal anterior polar cataracts can either be unilateral, or bilateral (symmetric

or asymmetric). They are present since birth and they are a variant of anterior polar lens opacities. Pyramidal cataracts consist of hyperplastic lens epithelium in a collagenous matrix. Patients with this condition are most likely to develop amblyopia and cataract surgery is required for many patients [1]. Our patient refused to cure his cataract.

* Corresponding author.

E-mail address: ramosoft25@gmail.com (O. Lezrek).

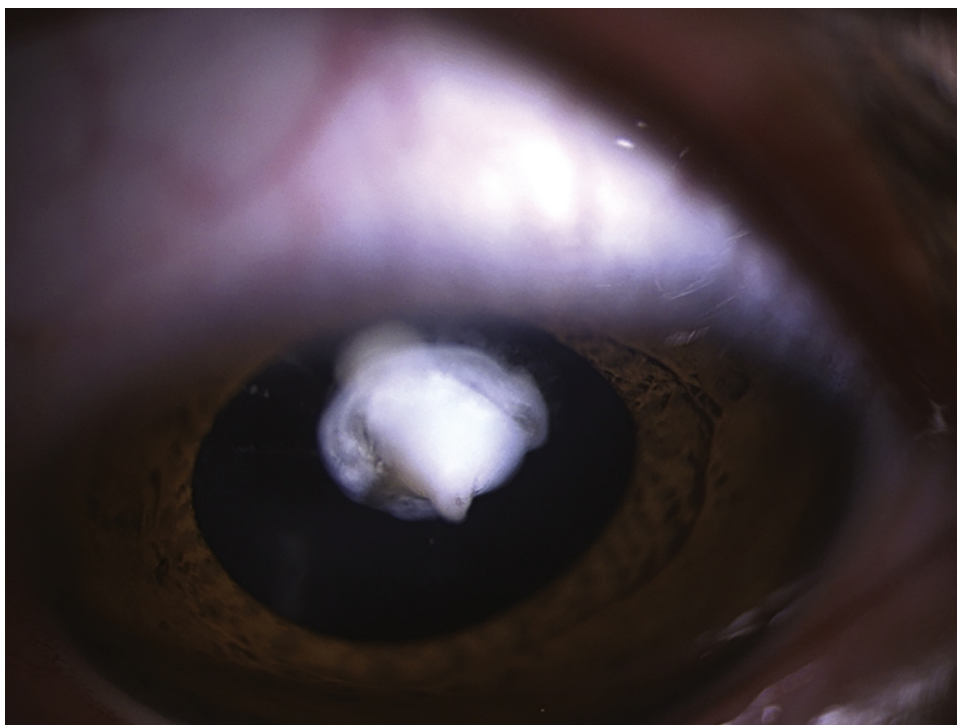


Figure 1. Front photography showing the anterior pyramidal cataract.

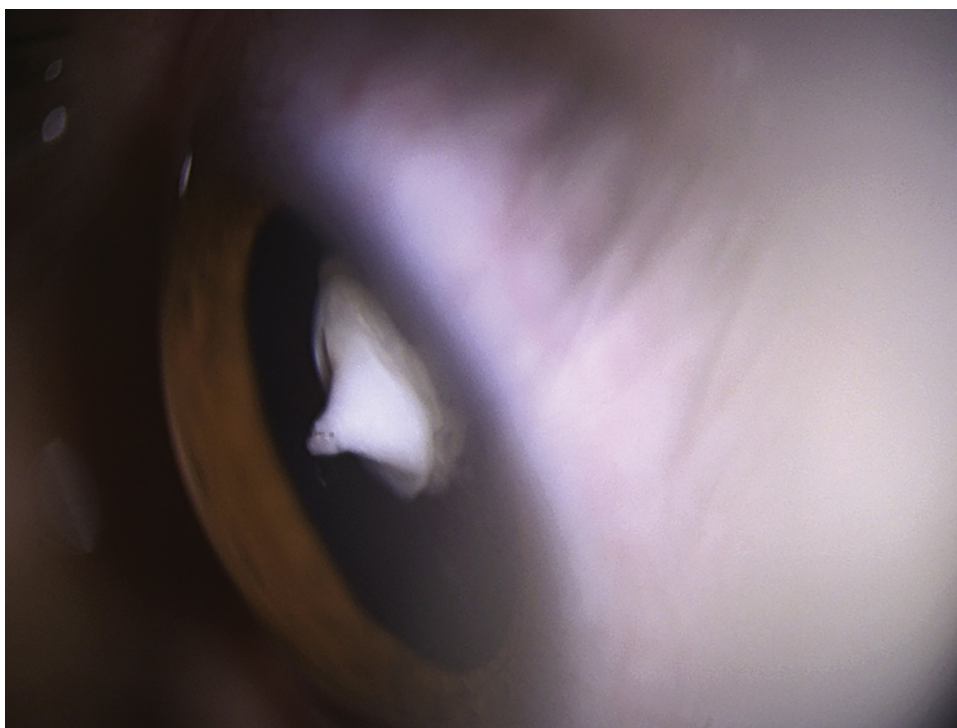


Figure 2. Profile photography showing the protrusive pyramidal growth in the anterior chamber.

Disclosure of interest

The authors have not supplied their declaration of competing interest.

Reference

[1] Wheeler, David T, et al. Pyramidal anterior polar cataracts. *Ophthalmology* 106;(12):2362-2367.