



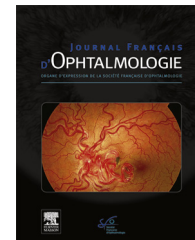
ELSEVIER

Disponible en ligne sur

ScienceDirect
www.sciencedirect.com

Elsevier Masson France

EM|consulte
www.em-consulte.com



IMAGE

Posterior staphyloma in a hyperopic eye



Staphylome postérieur dans un œil hypermétrope

O. Lezrek^{a,*}, C. Daoudi^b, M. Ez-Zahraoui^b,
I. Ben dali^b, M. Laghmari^b

^a Cabinet Lazrak d'ophtalmologie, Rabat, Morocco

^b Service d'ophtalmologie A de l'hôpital des spécialités, université Mohammed-V-Souissi, Rabat, Morocco

Available online 8 November 2017

A 47-year-old woman consults for optical correction, with a visually impaired left eye. Visual acuity in right eye was 20/20 and the left eye was 20/100, Refraction of left eye was +4.75 spherical, and best visual acuity corrected was 20/50, slit-lamp examination was normal, the fundus

examination finds localized chorioretinal atrophy within a posterior staphyloma (Fig. 1). Ultrasound confirmed the presence of grade 1 staphyloma and an axial length 22 mm (Fig. 2). Posterior staphyloma is usual in high myopic eyes, it is uncommon in hyperopic eyes.

Formation médicale continue

* Corresponding author.

E-mail address: ramosoft25@gmail.com (O. Lezrek).



Figure 1. Mosaic fundus of the left eye showing chorioretinal atrophy within posterior staphyloma.

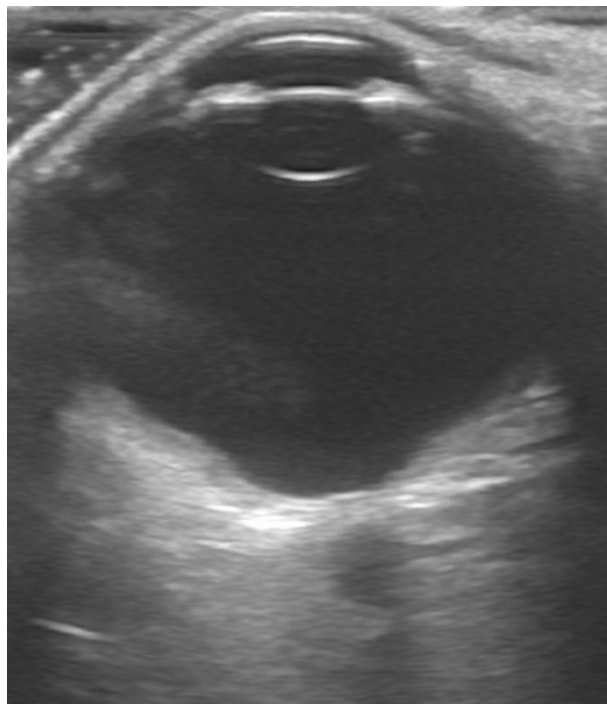


Figure 2. B-Scan of the left eye showing the posterior staphyloma.

Disclosure of interest

The authors declare that they have no competing interest.